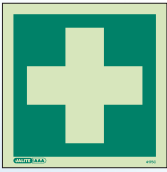
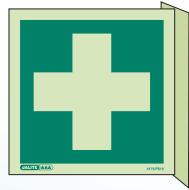


FIRST AID



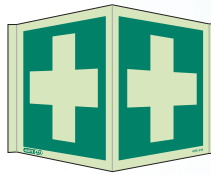
4175 C, 4175 E

Wall Mounted Double Sided

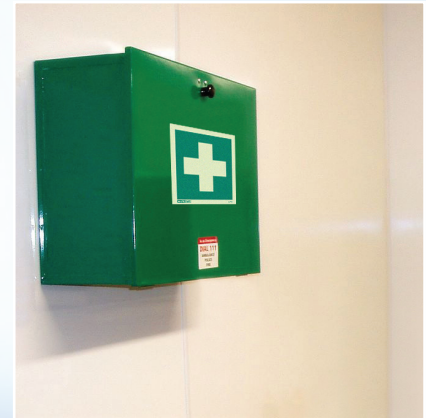


4175 FS15, 4175 FS20

Panoramic



4175 P15, 4175 P20



4175C (First Aid)



4236 D

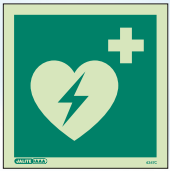


4236 PT, 4236 M



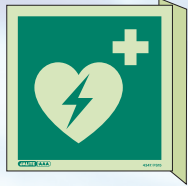
4986 M

DEFIBRILLATOR



4347 C, 4347 E

Wall Mounted Double Sided

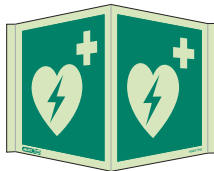


4347 FS15, 4347 FS20



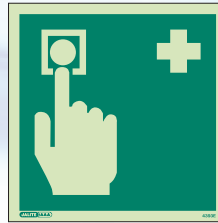
4347 D

Panoramic

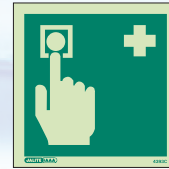


4347 P15, 4347 P20

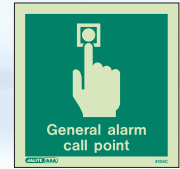
DOCTOR / PARAMEDIC & FIRST AID CALL POINT



4393 E



4393 C



4155 C



4396 E



4396 C

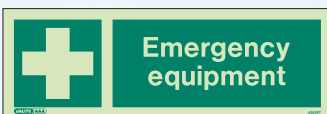
EMERGENCY EQUIPMENT



4362 C

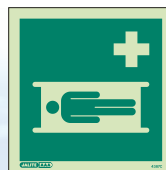


4362 D



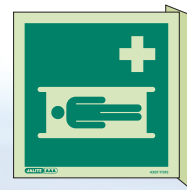
4362 PT, 4362 M

STRETCHER



4387 C, 4387 E

Wall Mounted Double Sided

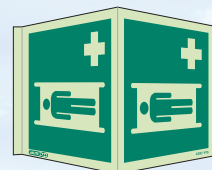


4387 FS15, 4387 FS20



4386 D

Panoramic



4387 P15, 4387 P20

Sizes:
C: 150 x 150mm, **D:** 150 x 200mm, **E:** 200 x 200mm,
FS15: 150 x 150mm, **FS20:** 200 x 200mm, **M:** 80 x 200mm,
PT: 100 x 300mm, **P15:** 150 x 150mm, **P20:** 200 x 200mm
 Please order as required,
 state: (V) for Self Adhesive Vinyl or (R) for Rigid PVC.

